

DROPSSENS

Screen-Printed Gold Electrodes

(ref. 220AT, 220BT, C223AT, C223BT and C220AT)

Disposable **Gold Electrodes** are ideal for working with microvolumes, for decentralized assays or to develop specific (bio)sensors.

Useful for undergraduate lab to avoid tedious polishing of solid electrodes.

The electrochemical cell consists on:

Working electrode: Gold

Counter electrode: Gold

Reference electrode: Silver

Ceramic substrate: L33 x W10 x H0.5 mm

Electric contacts: Silver



220AT
High temperature curing ink, WE 4mm



C223AT
High temperature curing ink, WE 1,6mm



C220AT
High temperature curing ink, WE 4mm. Work in solution (sensing area closer to the end of the strip)



220BT
Low temperature curing ink, WE 4mm



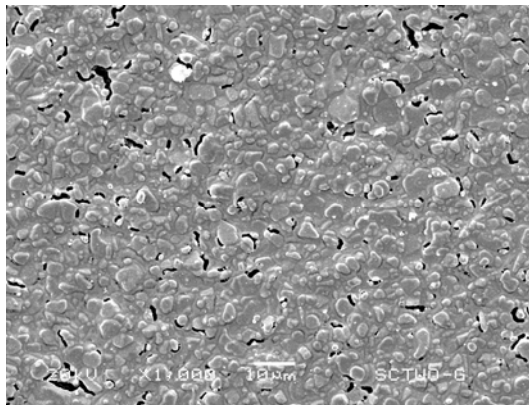
C223BT
Low temperature curing ink, WE 1,6mm

Electrodes screen-printed with high (AT) and low (BT) temperature curing inks which may have different properties depending on the application. Working electrode is available in two sizes: 4 mm or 1,6 mm diameter. **C220AT** is specifically designed to work in solution by entirely immersing sensing area.

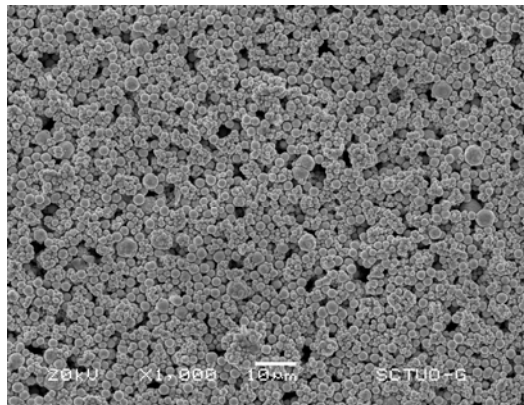


SEM images of working electrode

AT Models



BT Models



Screen-Printed Gold Electrodes are commercialised in 75 units packs. They should be stored in the dark at room temperature in a dry place.

Also, two specific **connectors** that act as an interface between the screen-printed electrode and any potentiostat are available at [DropSens](https://dropsens.com).

ref. DSC



ref. CAC

