

DROPSSENS

Thick-film Copper Electrode

(ref. DRP-CU10)

Disposable **Thick-Film Copper electrodes**. Suitable for working with microvolumes (ref. DRP-CU10) and ideal for decentralized assays or to develop specific (bio)sensors. Useful for undergraduate lab to avoid tedious polishing of solid electrodes.

Ceramic substrate: L33 x W10 x H0.5 mm

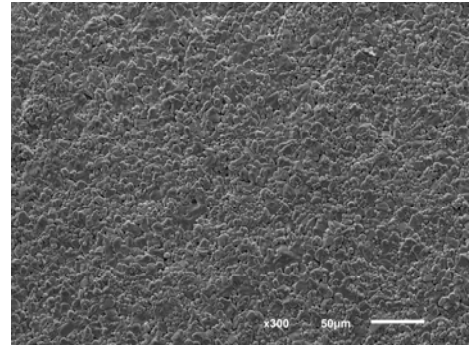
Electric contacts: Silver

The electrochemical cell consists on:

Working electrode: Copper (4 mm diameter)

Counter electrode: Carbon

Reference electrode: Silver



SEM image of copper working electrode

Thick-Film Copper electrodes are commercialised in 20 units sets individually packaged.

They should be stored at room temperature in a dry place.



Also, two specific **connectors** that act as an interface between the screen-printed electrode and any potentiostat are available at **DropSens**.



ref. DSC



ref. CAC



Parque Tecnológico de Asturias
Edif. CEEI - 33428 LLanera (Asturias).
Spain

(+34) 985 27 76 85

info@dropsens.com