

# DROPSSENS

## *Customised Flow-Cells*

*DropSens* is able to manufacture tailored flow-cells following customer's specifications, including different designs and materials, aimed for particular applications:

- ❖ Flow-cell associated with a powered magnet designed to do Flow Injection Analysis with magnetic beads:

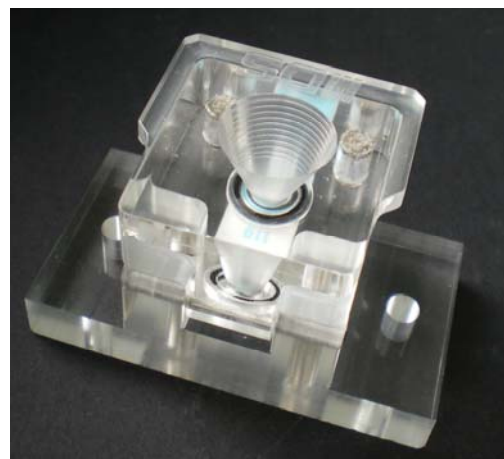
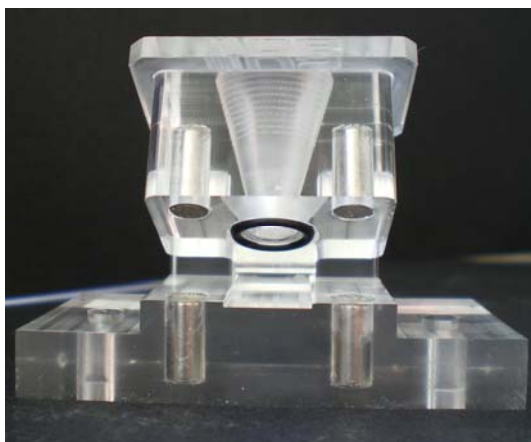


A switch allows to easily turn on and off magnet



Image shows the strong attraction applied to the SPE's sensing area by the potent magnet.

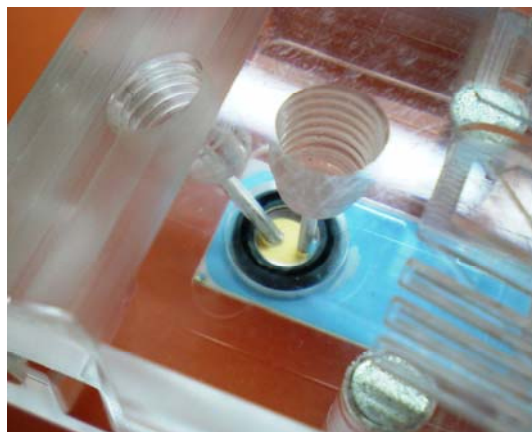
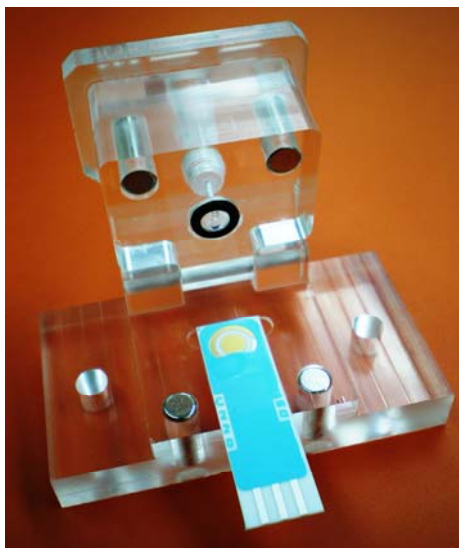
- ❖ Modified cell with a conical well which allows working with required amount of solution in batch analysis:



# DROPSSENS

## *Customised Flow-Cells*

- ❖ Flow-cell with adapted design to fit C220AT SPEs and an O-ring which encloses only working electrode allowing its modification without affecting counter and reference electrodes:



O-ring isolates counter and reference electrodes from flowing solution.

- ❖ Cells may be manufactured in different materials as well as methacrylate. **Polypropylene** and **Kel-F** are suitable to work with organic solvents.

