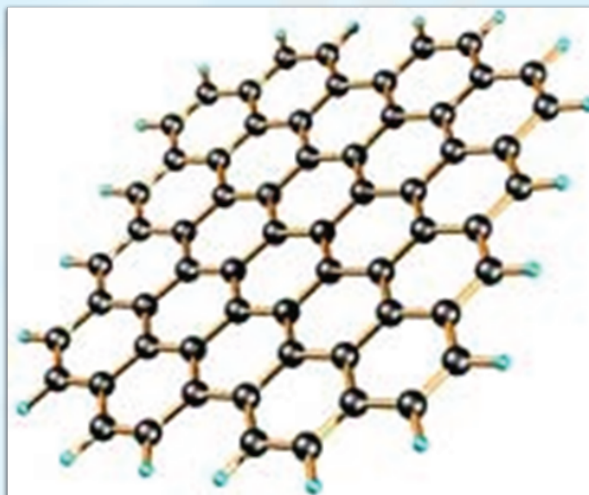


## Graphene Solution

Ref. GPHSOL



**Graphene** solution is included in the *DropSens* carbon nanomaterials range.

Graphene is a two dimensional sheet of  $sp^2$ -bonded carbon atoms tightly packed into a hexagonal configuration. Graphene possesses exceptional properties, such as large surface area and high electrical and thermal conductivity, which made it of significant interest in Electrochemistry.

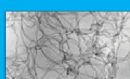
*DropSens* graphene solution is an aqueous, homogeneous, black liquid with a graphene concentration of **1 mg/mL**. The graphene has a surface area of **650 - 750  $m^2/g$**  and an average particle diameter less than **2 microns**. The material is composed of aggregates of sub-micron sized particles so the platelet shape is not dominant

The product is available in 1.0 or 5.0 mL order quantities and it has been specially designed for electrodes modification.

### Related products



CNFSOL



CNTSOL



GPHOXSOL



GPHOXSOL-AQU

Full Catalogue



Parque Tecnológico de Asturias - Edif. CEEI. 33428 LLanera (Asturias). Spain  
(+34) 985 27 76 85 - info@dropsens.com - www.dropsens.com

Contact Form

