

Batch Injection Analysis Cell for Screen- Printed Electrodes
(200 μL micropipette or 1000 μL micropipette)

Refs. BIASPE02
BIASPE10



BIASPE is a **Batch Injection Analysis** (BIA) Cell designed to work with Screen-Printed Electrodes (SPEs) as a robust portable electroanalytical system. Thanks to the use of a battery-powered electronic pipette, it offers results as a standard FIA system making it a convenient and easy to use tube-less FIA system for SPEs.

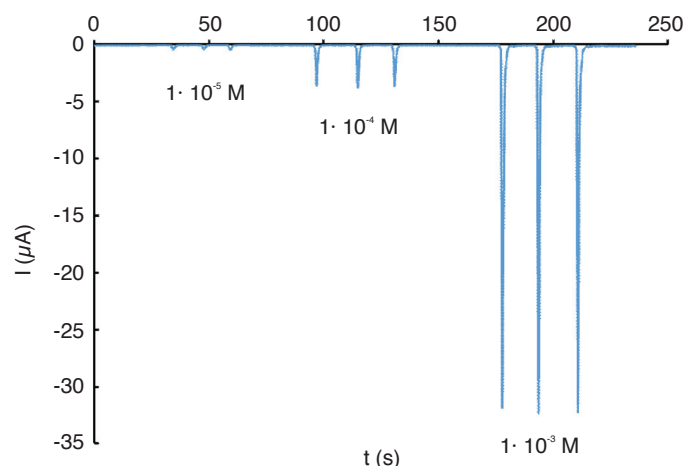
BIASPE can be used with all standard **DropSens SPEs** with the *sensor part in the middle of the strip* and formed by electrochemical cells of three electrodes: working electrode, reference electrode and auxiliary electrode. It has an **innovative open-close system** (no screws needed) and **easy SPEs replacement**.

The **Electronic Micropipette P200M** (20-200 μL) **BIASPE02** or **P1000M** (100-1000 μL) included in **BIASPE10** can be programmed with a user- friendly and intuitive computer software allowing automatic aliquots dispensing after programmed times; it can also be manually programmed in order to use other available dispensing modes such as Forward pipetting, Repetitive pipetting, Mix or Reverse pipetting.

When compared with a standard FIA system, in the **BIASPE02** the electronic pipette is the pump and the injection valve, therefore reproducible flow rate and injection volume (electronically controlled) are ensured, and problems with air bubbles in the system are avoided.

Batch Injection Analysis Cell for Screen- Printed Electrodes (200 μL micropipette or 1000 μL micropipette)

Refs. BIASPE02
BIASPE10



Amperometric detection of potassium ferricyanide in 0.1 M KCl using the BIASPE02 cell with DRP-110 screen-printed electrode and with stirring. E_{det} : -0.2 V; pipetting speed: 6; injection volume 40 μL ; volume of 0.1 M KCl in the BIA cell: 80 mL.

CELL: General Specifications

- Volume: Up to 80 mL
- Material: Acrylonitrile butadiene styrene (ABS) - non compatible with *organic* solvents
- Dimensions: 11x11x9 cm (L x W x H) ; [11x11x32 cm (with Micropipette inside)]
- Weight: 405 g ; [525 g (with Micropipette inside)]

MICROPIPETTE: General Specifications

- Volume Range: 20 - 200 μL (P200M) or 100 - 1000 μL (P1000M)
- Power: Li-ion Battery
- PC interface: USB
- Automatic Pipetting Modes: User programming (volumes and times) via PC software
- Manual Pipetting Modes: Forward, Repetitive, Mix, Reverse
- Aspiration Speed: 1-6 (six speeds)
- Pipetting Speed: 1-6 (six speeds)
- Tips: DTIPD200 (20-200 μL) or DTIPD1000 (100-1000 μL)

Related products



DTIPD200



CAST



CAC



STAT400



STAT300

Full Catalogue



Parque Tecnológico de Asturias - Edif. CEEI. 33428 LLanera (Asturias). Spain
(+34) 985 27 76 85 - info@dropsens.com - www.dropsens.com

Contact Form

