

Thick-film Bismuth Electrode (Aux.: C ; Ref.: Ag)

Ref. BI10



Disposable **Thick-Film Bismuth electrodes**. Suitable for working with microvolumes (ref. DRP-BI10) and ideal for decentralized assays or to develop specific (bio)sensors. Useful for undergraduate lab to avoid tedious polishing of solid electrodes.

Ceramic substrate: L33 x W10 x H0.5 mm

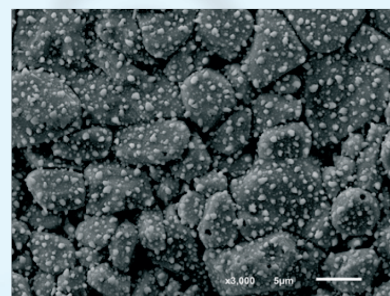
Electric contacts: Silver

The electrochemical cell consists on:

Working electrode: Bismuth (4 mm diameter)

Counter electrode: Carbon

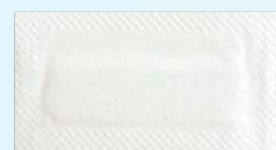
Reference electrode: Silver



SEM image of bismuth working electrode

Thick-Film Bismuth electrodes are commercialised in 20 units sets individually packaged.

They should be stored at room temperature in a dry place.



Also, specific **connectors** that act as an interface between the screen-printed electrode and any potentiostat (refs. DSC, CAC) and other accessories are available at [DropSens](http://DropSens.com).

Related products



DSC



CAC



FLWCL



CELL



STAT400



STAT8000

Full Catalogue



Parque Tecnológico de Asturias - Edif. CEEL. 33428 LLanera (Asturias). Spain
(+34) 985 27 76 85 - info@dropsens.com - www.dropsens.com

Contact Form

