

Graphene modified Screen-Printed Carbon Electrodes

Refs. 110GPH
C110GPH

Graphene modified
Screen-Printed
Carbon Electrode
Ref. 110GPH



Graphene modified
Dual Screen-Printed
Carbon Electrode
Ref. C110GPH



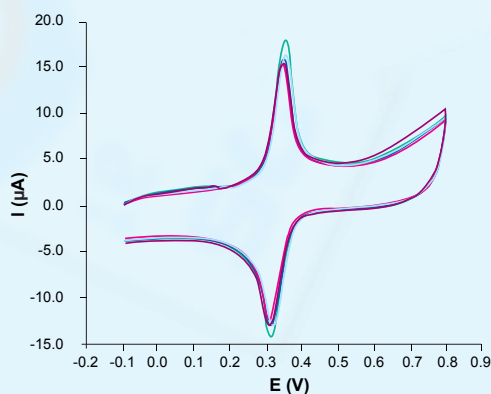
These disposable **Screen-Printed Carbon Electrodes** (SPCEs) modified with **Graphene (GPH)** as a carbon based nanomaterial are designed for the development of (bio) sensors with an enhanced electrochemical active area.

Ceramic substrate: L33 x W10 x H0.5 mm
Electric contacts: Silver

The electrochemical cell consists on:

Working electrode(s): GPH / Carbon
Auxiliary electrode: Carbon
Reference electrode: Silver

Graphene SPCEs are commercialised in 50 units packs. Store at room temperature, protected from light in a dry place.



Cyclic voltammograms of $1 \cdot 10^{-4}$ M Dopamine in 0.01M HCl at 50 mV/s. Samples = 5
Graphene SPCEs (ref. DRP-110GPH). RSD% = 5%

Also, specific connectors that act as an interface between the screen-printed electrode and any potentiostat (ref. DSC, CAC) and other accessories are available at [DropSens](#).

Related products



110GPHOX



DSC



CAC



FLWCL



CELL



STAT400

Full Catalogue



Contact Form

